



STUDIO 12

EASY 3D SCANNING
HIGH PRECISION
RESULTS



What's new to Artec Studio 12



3D INTELLIGENCE



SPEED



ERGONOMICS

We aim to produce the most effective products for our clients. As such, we are proud to present our most advanced, powerful, and comprehensive professional 3D scanning software yet, which is fast, smart and easy to use, but which still never compromises on accuracy!

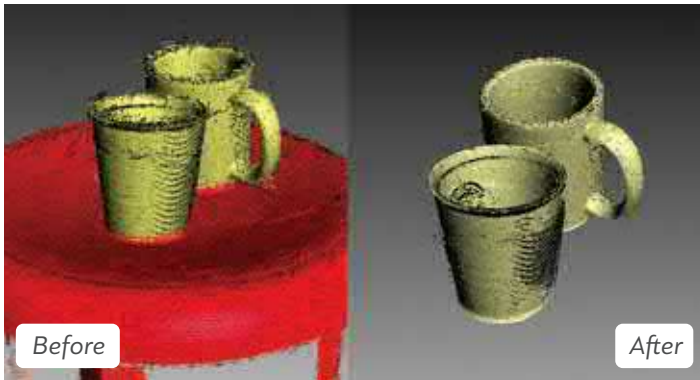
www.artec3d.com

You asked. We delivered.

The importance of a strong and long-lasting relationship with our customers and the value of their feedback has led specialists at Artec 3D to develop our most user-friendly version of Artec Studio, with around 75% of new features made by customer request.

ARTEC STUDIO 12 FEATURES IN FOCUS

3D INTELLIGENCE.
BUILT WITH YOU IN MIND.



Smart base removal tool

Faster, better and much more efficient

Building on the algorithm introduced in AS11, this intelligent tool now detects even curved or uneven base types, removing the base surface and all data below it. Featuring both automatic and manual modes, smart base removal almost completely eliminates what was once one of the most time consuming manual steps in post-processing.

Ultra-compact data compression

Artec Studio 12 provides its users with a new option to compress 3D data fast and effectively. The compression ratio is increased by up to 10x, reducing the disk space needed to store a project by 2-3 times, without the risk of texture loss. Great for storing more projects on your tablet or PC and faster sharing and transfer.



Automatic sensitivity settings

For scanning tricky surfaces with Artec Eva

Previously, users had to manually modify the sensitivity settings to scan thin, black or shiny objects. Now the software analyses your data and automatically chooses the optimal settings for your object surface so you don't have to. Furthermore, we have improved the algorithms so that significantly less noise is created when scanning tricky areas, ensuring the best possible result every time. Applies to Eva only.

Smart memory management

Our new smart memory system is able to select exactly what data must be stored in RAM and what can be discarded, freeing up your RAM for global registration and Autopilot 3D data processing. A big help for when you have to scan large projects.

Speed. Whatever the application, get there faster with Artec Studio 12.

Global registration now up to 20x faster!



Super fast global registration

Previously the most time consuming step in data processing, global registration has been developed to now work at up to 20X the speed. Save precious minutes in small projects, and hours in large ones!

Boosted capturing speed

Artec Studio 12 has been optimized to make it easier for your Artec Eva to achieve the maximum capture rate of 16 FPS. For faster, smoother scanning with top notch tracking!

ARTEC STUDIO 12 FEATURES IN FOCUS

ERGONOMICS.

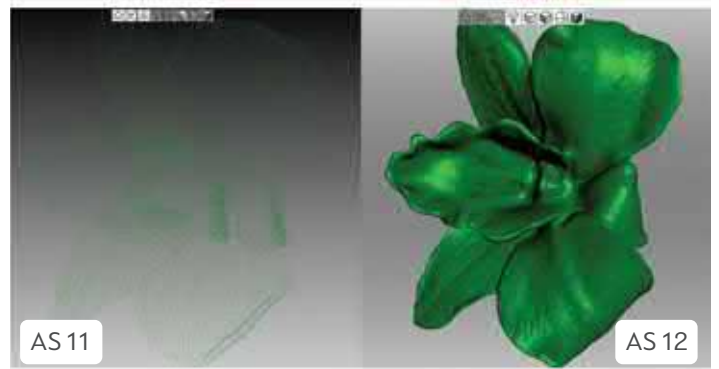
A USER FRIENDLY EXPERIENCE FOR BETTER RESULTS.

Navigation



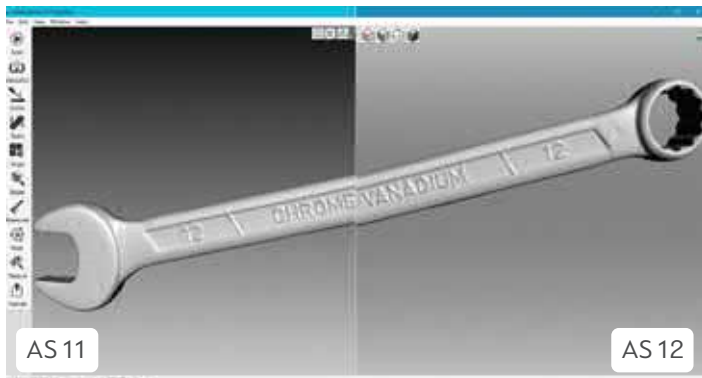
3D Mouse Support

Compatibility with the 3Dconnexion 3D mouse allows Artec Studio 12 users to navigate in the software's interface in 3D. An especially useful tool for 3D designers and engineers alike.



Full visualisation of 3D models on rotation

We have increased the complexity threshold of simplified rendering to accommodate modern video cards. Now your object is shown as a full 3D model during rotation, and not just as a point cloud. Much better for editing or checking your model!



Background

A whole new 3D background color and gradient for better viewing of 3D objects in Artec Studio and a cleaner, fresher look.



Hints and Hotkeys

User-friendly panels with added hints and helpful new hot keys for the seamless workflow. Convenient for new users and a great time saver.

Progress bar

With the new progress bar in the Windows Taskbar, you no longer need to keep the AS windows open to monitor the progress. Great for multitasking!

Scanning

Full screen scanning mode

Better user and viewing experience. Get the whole picture while you scan without the visual distraction of other panels and settings! Especially useful for those who scan on tablets or smaller laptops.

Simplified scan panel

Continuous data capture algorithm is renamed to Auto-align. Depth of field has been moved to Advanced settings and AS 12 now automatically detects the type of scanner used and includes it in the assigned name of the scan captured. Great feature for users with multiple Artec scanners.

Eraser

New and improved eraser tool

- / Non-stop eraser for effortless editing
- / Deselect eraser easily
- / Smart base selection (*for removing even curved bases in manual mode*)

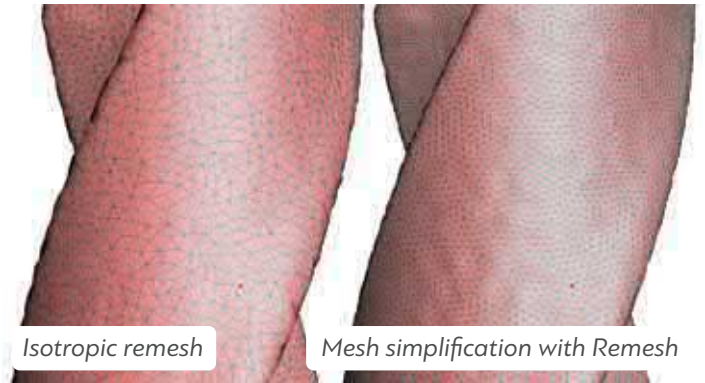
ARTEC STUDIO 12 FEATURES IN FOCUS

Processing



Auto-select Scans in Align

Increased automation of frequently used functions, including the automatic 3D scans selection in the align mode.



Improved tool panel

For ease of use we have expanded the clickable area to open or close each algorithm's parameters panel, the rarely used Radius setting in the Fusion toolbar has been hidden, and the Remesh button has been renamed as Isotropic Remesh for greater clarity.

Texture mapping



Optimised color settings

Optimized brightness, saturation, and contrast values set by default after texture mapping for the best results.



Improved User Interface

Renamed commands such as Triangle Map and Texture Atlas to Texture Preview and Texture Export to help users know which texturizing option to select.

Export

/ Export mesh square and mesh volume

Now you can export the model's surface area and volume numbers to CAD and CAM software. Great for engineering, quality assurance and industrial design.

/ Export format

When selecting to export a file, the software automatically suggests the previous export format used, making life just that little bit easier.



/ Also supports SOLIDWORKS 2017

Export your 3D models to SOLIDWORKS 2017 via the 3D Systems or DeziGNWorks plugins.

/ Optimised user interface

COMPARE ARTEC STUDIO

ADVANCED PROCESSING: STREAMLINED FOR FULL CONTROL AT SPEED

	12	Artec Studio version	
		11	10
Global registration	Up to 20 times faster than AS11	•	•
Smart memory management for smoother processing	•		
Auto texture correction	•	•	•
Texture mapping	Up to 10 times faster than AS10	Up to 10 times faster than AS10	Up to 5 times faster than AS 9
Texture healing brush	•	•	•
Expanded eraser options	•		

FAST, AUTOMATIC PROCESSING FEATURES

Autopilot: A-Z automatic post-processing pipeline	•	•	
Smart base removal	Deletes even curved surfaces and all data beneath the base	Removes single flat base only	
Auto-align your scans	Texture + Geometry based 95% of scan data sets can be autoaligned	Texture + Geometry based 95% of scan data sets can be autoaligned	Texture based only 65% of scan data sets can be auto-aligned
Fast mesh simplification	•	•	•

EASY SCANNING

Scan black, shiny, fine objects	Yes! Automated sensitivity for easy scanning and best results when using Eva	Manual sensitivity control	Manual sensitivity control
Eva maximum FPS boosted	•		
Fullscreen scanning mode	•		
Real-time fusion: object size	No limit to object size	No limit to object size	Only small objects
Real-time fusion: tracking	Boosted	Boosted	•
Real-time fusion: improved visualization for easier scanning	•	•	
Texture and geometry tracking	•	•	•
Tracking Alignment Correction	•	•	•
3rd party sensor support	Ultimate Edition: Microsoft Kinect V1 & V2, ASUS XTion, PrimeSense Carmine, Intel RealSense F200 (IVCAM), R200 (DS4) & SR300, XYZprinting 3D scanner		
Scanning on MacOS	Artec ScanApp beta	Artec ScanApp beta	Boot Camp

ERGONOMICS

3Dconnexion 3D mouse compatibility	•		
Glossy 3D model rendering: shows full detail of scans	•	•	
Full visualization on rotation	•		
New UI design	New and improved	•	
Optimized color settings	•		
New background	•		
Hints and hotkeys	•		
Progress bar in Windows Taskbar	•		

PROJECT COMPRESSION TOOLS

Basic	•	•	•
Ultra-compact	•		

MEASUREMENT TOOLS

Measurement tools: Linear, geodesic, sections, distance maps, volume, annotations, CSV, DXF, XML export	•	•	•
Export mesh square and mesh volume	•		

DIRECT SCAN TO CAD

Direct export to Design X	•	•	
Direct export to SOLIDWORKS	SOLIDWORKS 2014-2017	SOLIDWORKS 2014-2016	

EXPORT FORMATS

Full range of export 3D formats: OBJ, PLY, WRL, STL, AOP, ASCII, Disney PTEX, E57, XYZRGB	•	•	•
---	---	---	---

MOBILITY: TABLET COMPATIBILITY

UI adapted for tablet use	Improved	•	
Full functionality and support for Microsoft Surface Pro 4 tablet	•	•	

VIDEOCARD COMPATIBILITY

NVIDIA Quadro	•	•	
NVIDIA GeForce 400 Series or higher	•	•	•
AMD	•	•	•
Intel Series 4600 and higher	•	•	



STUDIO 12

Free trial version available
from 24 April 2017

Subscription or one-off purchase

Artec Studio is available to purchase as a yearly subscription, ensuring you are always up-to-date with the very latest version, or as a one-off lifetime purchase of a single version only.



Ultimate

For use with Artec 3D scanners and 3rd party sensors:

Artec Leo, Eva, Eva Lite, Space Spider, Spider, plus discontinued models (MH and MHT series AG, AC, W2 and T2)*

Microsoft Kinect for Windows V1 & V2, ASUS XTion, PrimeSense Carmine, Intel RealSense F200 (IVCAM), R200 (DS4) & SR300, XYZprinting 3D scanner

Professional

For use with Artec 3D scanners:

Artec Leo, Eva, Eva Lite, Space Spider, Spider, plus discontinued models (MH and MHT series AG, AC, W2 and T2)*

**For information on compatibility with other series of discontinued scanners, please contact support@artec-group.com*

Artec Studio 12
Ultimate

Artec Studio 12
Professional

Request Quote

Shonan Design (S) Pte Ltd

51 Ubi Avenue 1 #05-32 Singapore 408933
Web: shonan.com.sg Tel: +65 6741 3886