

AUTODESK® FEATURECAM® 2018

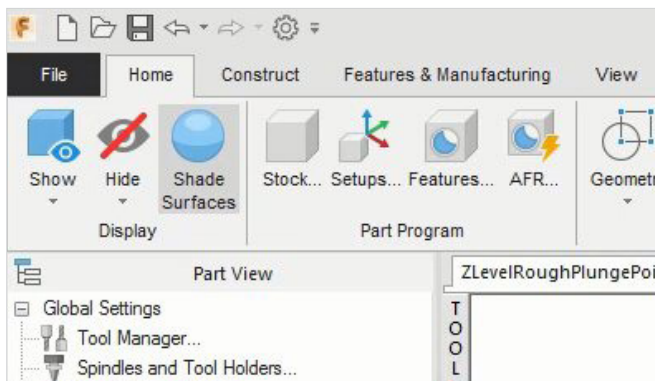
Make parts faster with automated CAM

Visit www.featurecam.com to find out more.

What's new

Explore new and enhanced features to automate your workflow from design to NC code; reduce programming time; and produce consistent results for CNC milling, turning, and wire applications.

FeatureCAM® 2018 includes a new user experience including a ribbon interface. Get better interoperability with third-party data, more automation to reduce programming time, and new technology for Swiss-type lathes.



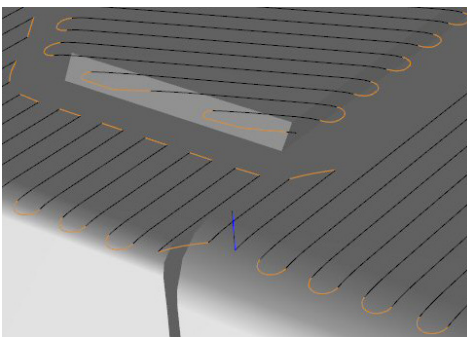
User experience improvements

The most notable change is a new ribbon interface:

- Enhances the look and feel of the software
- An icon, accompanying text and dynamic help give more insight into functionality
- Similar groupings simplify and speed up navigation
- Customizable to create your preferred working environment

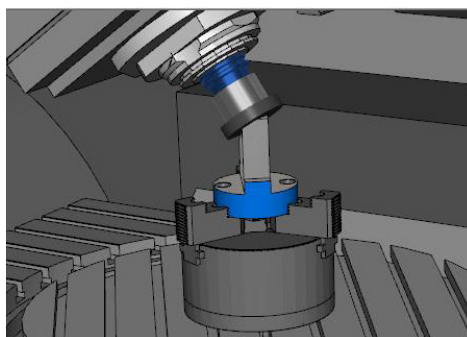
In addition to the ribbon:

- A new options dialog makes managing and changing project details easier
- Use the multi-channel editor to view, edit and align multi-channel NC programs



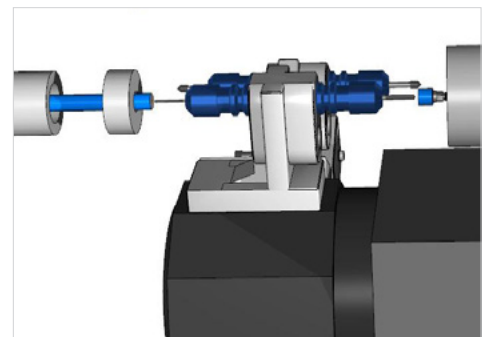
Automatic angle for parallel finishing

Automatically determine the optimum angle for your toolpath, based on the region you are machining. An optimal orientation minimizes the number of tool retracts and helps to create efficient toolpaths from multiple surfaces faster.



Automatic 3+2 positioning

Use the axis limits of your machine design file to automatically determine either a standard or alternate position. This helps validate your program is within your machine's working envelope before it is sent to the machine.

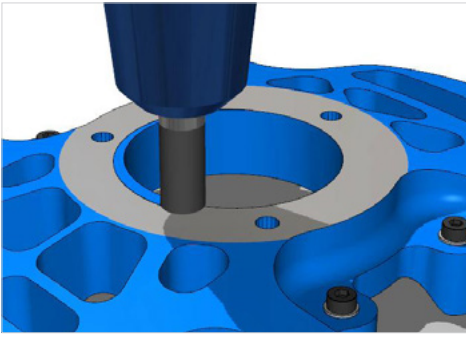


Swiss synchronization

Program and simulate advanced synchronization modes for Swiss-type lathes with superposition and double-end drilling.

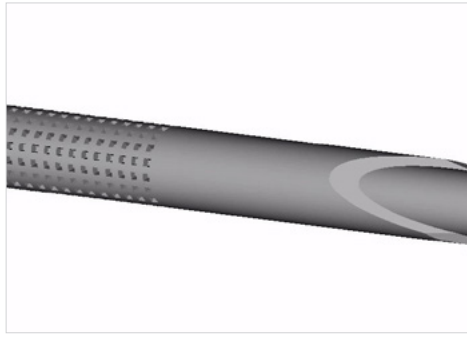
This helps to:

- Improve machine usage
- Reduce cycle times
- Improve throughput



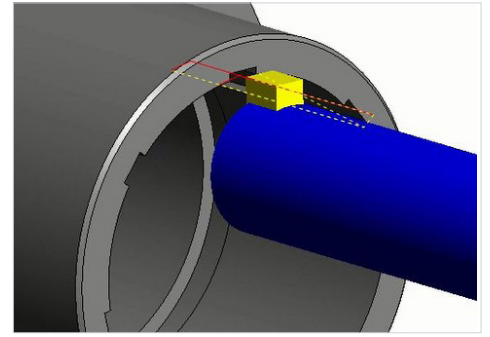
Spiral toolpath improvements

Use an inner boundary curve to constrain your toolpath to the region you want to machine. This creates a shorter toolpath to avoid fresh air cutting.



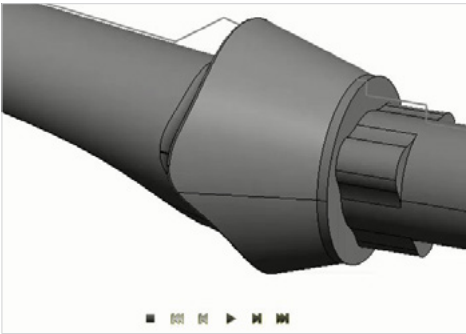
PartMaker–laser machining

Program and simulate Swiss machines with integrated laser cutting capabilities. You can control the pulse width, assist gas and power levels depending on your part shape and material.



PartMaker–keyway broaching

In addition to index and rotary broaching you can now use keyway broaching. Set the index position of the stock prior to machining, choose the number of cuts you want to make, and select the angular increment.



PartMaker–workflow improvements

To improve your workflow and user experience you can now:

- View and interact with 3D models in setup sheets to improve visualization of your processes
- Pause, rewind and show your tool shank with toolpath verification using a new heads up display toolbar.
- Undock windows for use on a second monitor

“We chose FeatureCAM for a number of reasons. It works on all of our machines and it’s easy to learn”

– Vincent Lavoie, Programmer | Precinov

Make Great Products

Autodesk manufacturing software helps you make better quality products, faster. Machine, print, inspect, and fabricate parts efficiently.

- Complete modular manufacturing solutions – CAM, additive, composites
- Manufacturing expertise to automate, optimize and integrate your manufacturing processes, in addition to your software
- Cloud-connected so you can collaborate and manufacture anytime, anywhere.

Learn more at www.autodesk.com/MAKE.

